



Canoe For Cancer



Canadian
Cancer
Society

Information Package

Thank you for participating in Canoe for Cancer and raising money to help find a cure for Cancer!

This paddle from Start to Finish is approximately a 13 Km paddle. Starting from the Big Chute to Port Severn Park. There is one pit stop at the GPCA Clubhouse where a drink and snack will be provided, and Lunch is provided at the end of the Paddle at Port Severn Park. There are also Escort Boats (example photo provided below) that are following along with you. If you need help at any time you can call to one of the Escort Boats and they will be able to provide assistance. If you need a drink, the Escort Boats also have water which they can provide to you. You are not required to paddle the whole distance. Please paddle the distance you are comfortable with (you will still receive a lunch and snack if you don't paddle the whole distance). Enjoy your paddle!

Start address: Big Chute Marine Railway
7001 Upper Big Chute Rd.
Coldwater, ON L0K 1S0

End Location: Port Severn Park,
39 Minten's Ln.,
Port Severn, ON L0K 1S0

We expect for all paddlers to wear their Life jacket and have a safety kit in their boat.

Escort Boat Example



****Escort Boats will have GPCA Canoe for Cancer signage on their boat which indicates they are an Escort Boat**

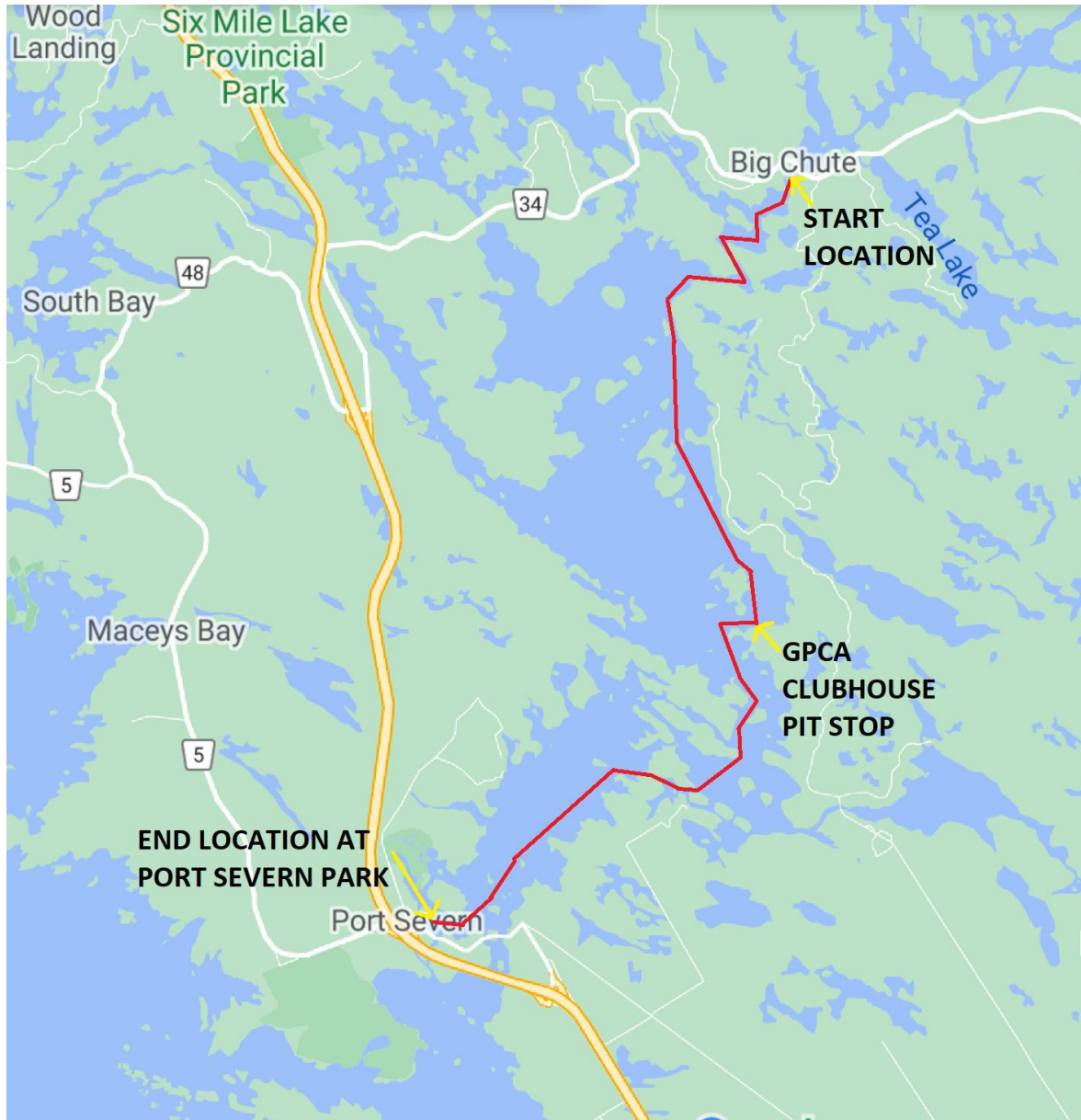




Route Directions & Information

Overall Route

The image below displays the overall route map.



**This route map will be broken into sections to help provide more detailed directions.

**The paddle is downstream

**It is important to note that we are generally following Trent-Severn Waterway channel markers except in one section where we follow Private channel Markers





Channel Markers

Below are examples of Channel markers. Some of these channel markers will be labelled on the maps in upcoming sections. We will also provide a list of the channel markers in order at the end of the package.

Lateral Buoys



Starboard Lateral Buoy



Port Lateral Buoy

Day Beacons



Starboard Day Beacon



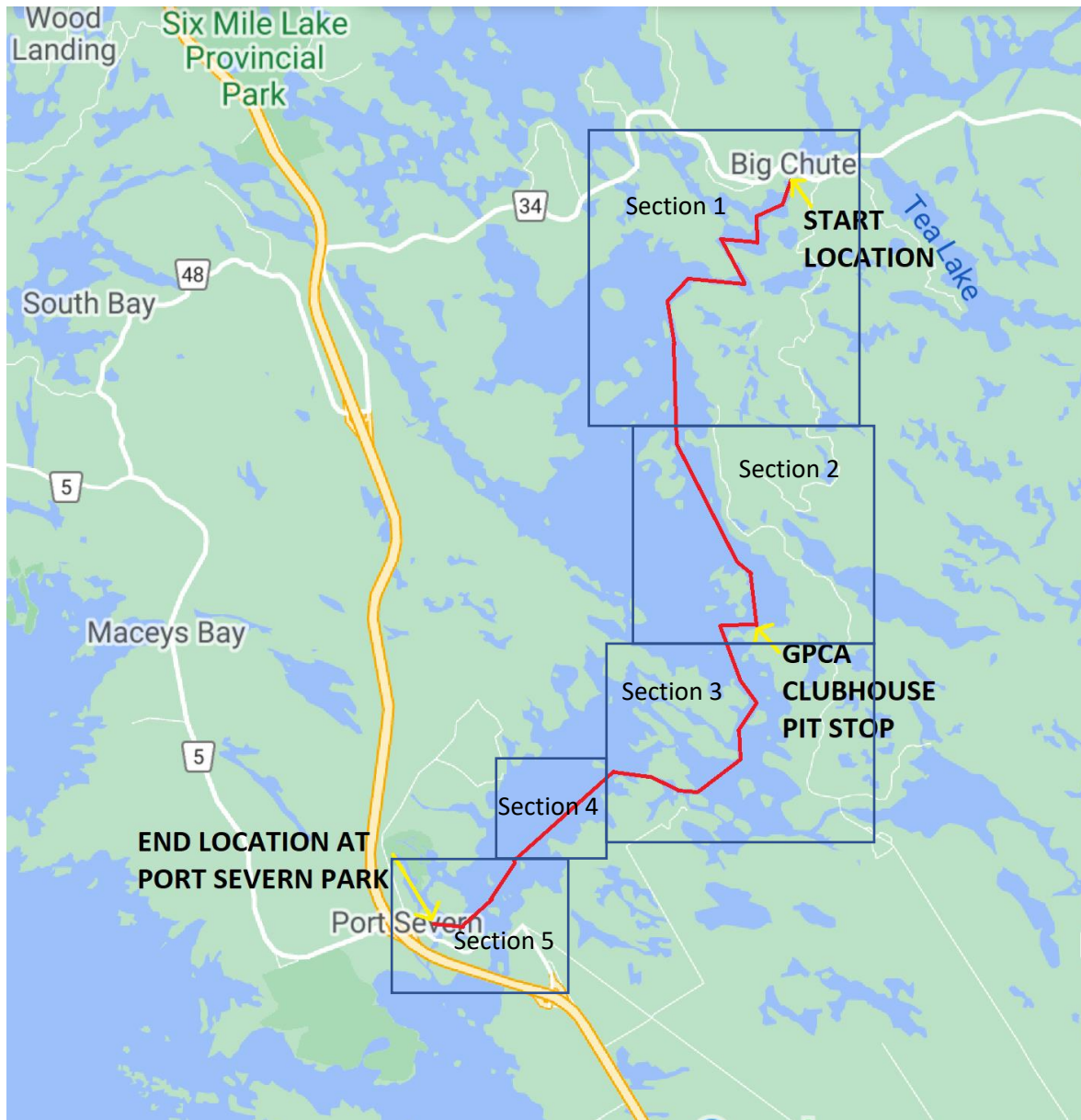
Port Day Beacon

There are other land markers that you will pass during the paddle. Those markers with a photo will be provided in the directions



Route Direction

The image below displays the overall route map divided into sections. Each section will provide a zoomed in map view of the route with photos of the scenery and landmarks (if any).



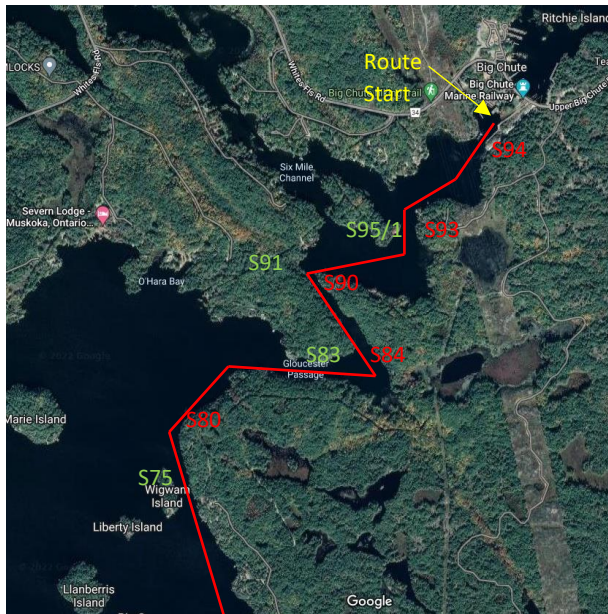
The directions will be in consecutive order. Red arrows on photos indicate the direction to proceed. →

All other coloured arrows indicate a significant location.



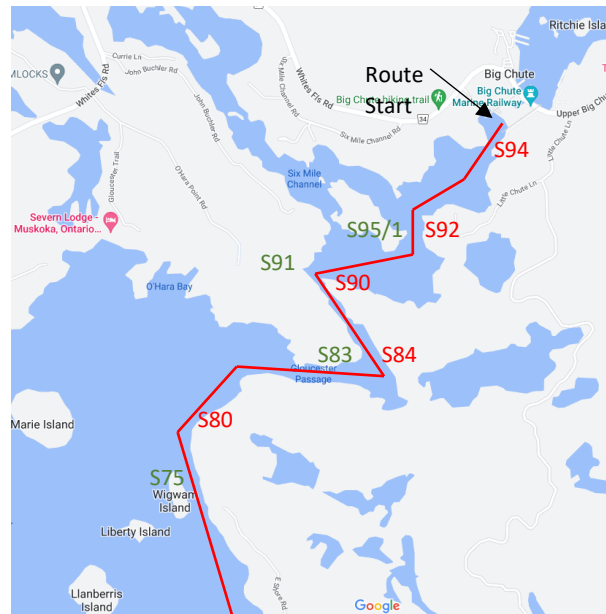
Section 1

The below maps show a satellite view and a map view of the route. These will be at the beginning of each section.



Section 1 satellite view of the route

**Some channel markers are shown on the maps.



Section 1 map view of the route

Directions:

1. You start the Paddle on Gloucester Pool. After exiting the Big Chute Marine railway (if available to ride), paddle forward past the starboard lateral Buoy S94
2. You will paddle until you reach a narrowing on your left which is marked by two lateral Buoys (S92 and S95/1) and a Port Day Beacon (S95), there is also a flagpole to your left. You will take a left at this narrowing. Followed by an immediate right turn.
3. Paddle until you reach another narrowing on your left which is marked by two lateral Buoys (S90 and S91) and a Port Day Beacon (S87). There is also a Sign labelled "Danger!" (Seen in photo. You will take a left here and head through this channel. Please be careful through this channel. There is an undertow here, so it is dangerous if your boat flips over.



Photo: Narrowing at Buoys S92, S95/1



Photo: Narrowing at buoys S90 and S91



Photo: Danger sign at entrance of Channel





4. Paddle through the channel until you reach the exit marked by two lateral Buoys (S84 and S83), there is also a Danger! sign to your left. Take a right here.



Photo: Channel view



Photo: Channel exit view



Photo: Danger! sign at Channel exit

5. Paddle past the flagpole and you will see the shoreline on your left curve to the left. Take a left as the shoreline curves to the left. This continues for a little while – continue to follow the left shoreline. Pass lateral Buoy (S80) There will be an island to your right as you round the shorelines bend, paddle between the island and the shoreline. You will pass by a port day beacon (S77) and lateral Buoy (S75). Continue following the shoreline to the left then you will come to a smaller passage (Circled in the last photo of the photo group below). You will see many islands to your right. Going into any of the passages in the islands to the right will lead you off course.



Photo: Paddle past the flagpole



Photo: Shoreline curving to left



Photo: Shoreline curving to left



Photo: Paddle between the island to the right and the shoreline to the left



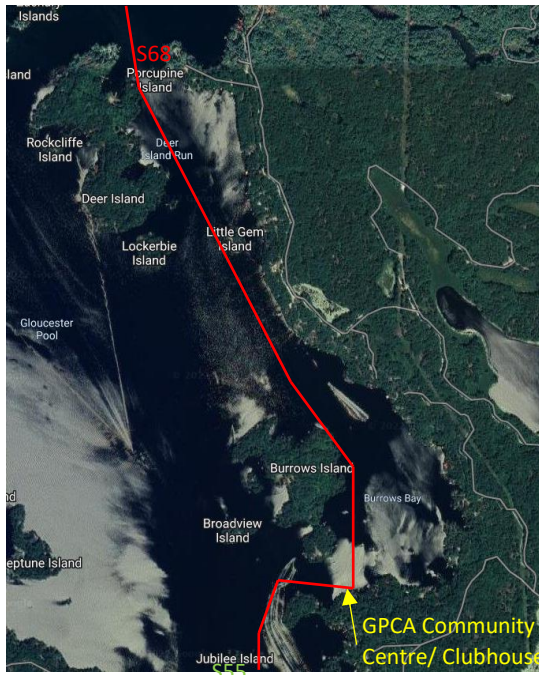
Photo: Paddle through the channel between the island and the shoreline to the left



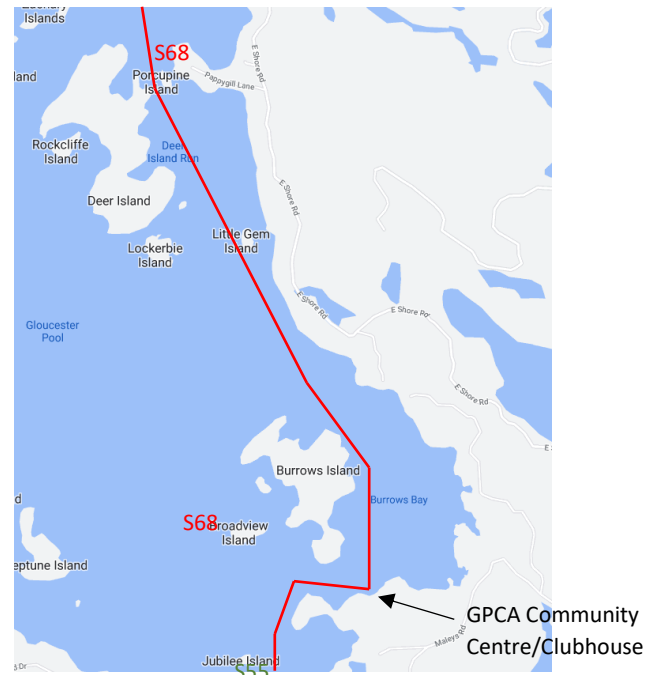
Photo: Aim for the passage circled in the photo. Island groupings to your right.



Section 2



Section 2 satellite view of the route



Section 2 map view of the route

6. Paddle towards the bridge to the island (seen in the first photograph). You will paddle through the passage on the right of the island, to the right of the Starboard Day beacon (S70) and a lateral Buoy (S68).
7. Continue straight between the island on your right and the shoreline on your left through Deer Island Run (Photo: Deer Island Run).



Photo: Enter through the passageway on the right of the island. Do not paddle through/under the bridge.



Photo: Passageway on the right of the island.



Photo: Deer Island Run



8. Follow the shoreline on the left side (Photo: Heading towards Burrows Island). Keep left when you come across a Port Day Beacon (S65).
9. As you are following the shoreline, you will see a small island between the left side shoreline and Burrows Island to your right side (Photo: Paddle right of the small Island between Shoreline and Burrows Island). You will want to paddle to the right of the small island. At this point you are leaving the marked channel (marked with lateral Buoys) and will navigate along Burrows Island by paddling to the left of Burrows Island. This will lead you to our halfway Rest Stop at the GPCA Clubhouse/Community Centre. You will rejoin the main marked channel after your rest.
10. The Clubhouse/Community Centre is a green building with tall pines and many docks in front of it. Please dock at the Clubhouse/Community Centre for a rest, washroom break and to grab a snack. There will be volunteers there to greet you.
11. If you pass a lateral Buoy (S58), you are on the wrong side of Burrows Island. Take the first left at the end of the island and you will see the Clubhouse/Community Centre on your right.



Photo: Heading towards Burrows Island



Photo: Burrows Island on right



Photo: Paddle right of the small Island between Shoreline and Burrows Island



Photo: Burrows Island on the Right, head straight towards the Clubhouse/Community Centre



Photo: Clubhouse/Community Centre



Photo: View of Lateral Buoy S58. Take a left to get to the Clubhouse/Community Centre

12. After your rest, head left towards the opening between Burrows Island and the Shoreline on your left side.
13. You will see the shoreline curve left, follow the curve and you will see a lateral Buoy (S55) and a Port Day Beacon (S55-1) to your right. Go straight Following the shoreline on your right side.



Photo: Right – Burrows Island, Left – Shoreline



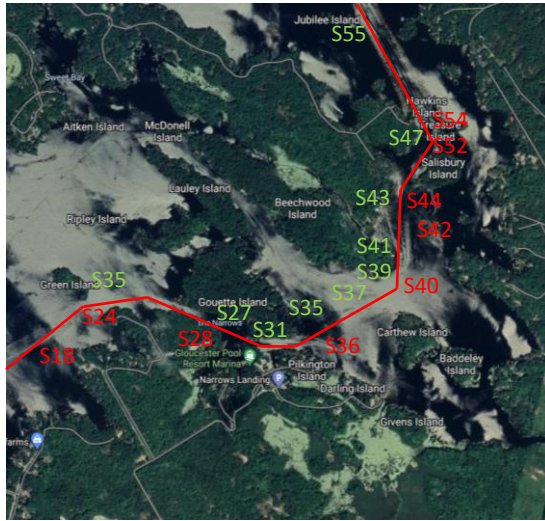
Photo: Follow the Shoreline to the left



Photo: When seeing lateral Buoy and Port Day Beacon, follow the shoreline on the right side



Section 3



Section 3 satellite view of the route



Section 3 map view of the route

14. You will see an opening between the shoreline on your right and an Island on your left. Paddle towards the opening. Follow the shoreline as it curves to the right. You will pass the multiple lateral Buoys (S54, S47 and S52) and a Starboard Day beacon (S48)
15. Continue through the channel between the island and right-side shoreline passing a lateral Buoy (S45/1)



Photo: Opening between shoreline on your right and Island on your left



Photo: Follow the shoreline as it curves to the right



Photo: Opening between shoreline on your right and Island on your left

16. In this area there are many lateral Buoys. Follow the lateral Buoys (S44, S43, S41, S40, S39, S37, S35, S36), paddling between the lateral Buoys. You will also pass a white boathouse titled "BEECHWOOD". You will notice the route will curve a bit, continue to follow the lateral Buoys until you reach an opening. This is the entrance to "The Narrows".



Photo: Continue straight between the lateral Buoys



Photo: White Boathouse titled "BEECHWOOD"



Photo: Opening between shoreline on your right and Island on your left



17. At the entrance to “The Narrows” there is one Starboard Day Beacon (S34) and one Port Day Beacon (S33). Upon entering The Narrows, paddle right and you will pass by Gloucester Pool Resort Marina on your left.



Photo: Close to Entrance to The Narrows



Photo: Entrance to The Narrows



Photo: Gloucester Pool Resort Marina

18. Continue to paddle The Narrows following between the Lateral Buoys (S31, S27, S28) and Starboard Day Beacon (S32). Once you reach the end of the channel take a left. You will paddle between the Shoreline on the left and Island's on your right. You will then pass by two lateral Buoys (S24, S23, S18) and Port Day Beacon (S21) as you reach an open water area.



Photo: Close to Entrance to The Narrows



Photo: Travelling through The Narrows



Photo: Exiting The Narrows



Photo: Exiting The Narrows



Photo: Exiting to the Open Water Area



Section 4



Section 4 satellite view of the route



Section 4 map view of the route

19. You are now on Little Lake Paddle the open water aiming towards the Islands far off in the distance. As you are paddling, you may see a white/beige cottage with a Peaked Brown roof in the distance. It will help to aim towards that Cottage until you reach your first Island on your left in which there will be a lateral Buoy (S16)



Photo: Open area view of Little Lake



Photo: White/beige cottage with Peaked Brown roof



Photo: View while paddling towards lateral Buoy S16

20. After Paddling past lateral Buoy S16 Continue paddling to the right of Starport Marina (Circled Steel roof over a boat port in photo). You will then pass another lateral Buoy S12. Look to your right and you will see a Port Day Beacon. Paddle towards the Port Day Beacon (S11).



Photo: Paddle right of Starport Marina (Circled in photo)



Photo: Closer view of Starport Marina



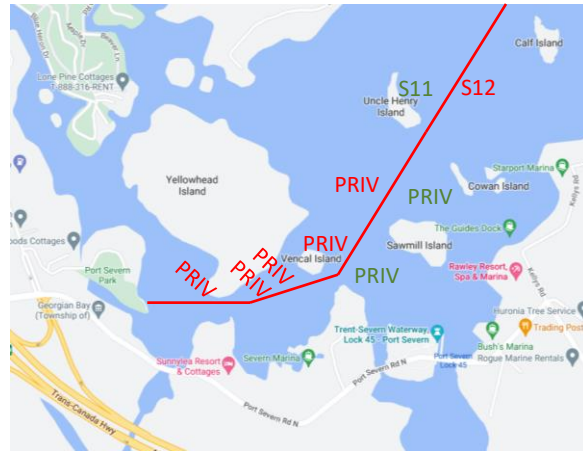
Photo: Paddle towards the Day Beacon S11



Section 5



Section 4 satellite view of the route



Section 4 map view of the route

21. After passing Port Day Beacon paddle towards the Island on the right.
22. You will paddle towards a “Taylor Docks” Sign. Take a Right when you see this sign. There are Privately marked lateral Port and Starboard Buoys. Follow the path of the lateral Buoys – there are many of them. While following these lateral Buoys you will pass a large Inn (Christie’s Mill Inn and Spa) on your left. Continue following the lateral Buoys rounding bends.



Photo: Paddle towards the Day Beacon
S11



Photo: Taylor Docks Sign – Go right



Photo: Taylor Docks Sign



Photo: View of lateral Buoy path when first entering



Photo: Christie’s Mill Inn and Spa



Photo: View of the lateral Buoys to follow after
passing Christie’s Mill Inn and Spa



Photo: View of lateral buoy path – continue
following the bends



23. You will pass a long row of Cruiser Boats at a Marina – this is the final stretch.
24. After Passing the Cruiser Boats you will see a Sandy Beach. This is Port Severn Park. You can dock your boat up on the beach or at the docks at the park.
25. Congratulations on finishing the Paddle! And a big thank you for raising money to help find a cure for Cancer.



Photo: Cruiser Boats at a Marina on your left – Paddle past



Photo: Port Severn Park



Channel Marker List

The list of Channel Marker's are in order of what you can expect to see during the route. Noting that there could be some marker's missing from this list.

Identification No.	Colour	Buoy or Day Beacon	Comments
<i>S94</i>	<i>Red</i>	<i>Starboard buoy</i>	
<i>S92</i>	<i>Red</i>	<i>Starboard buoy</i>	
<i>S95/1</i>	<i>Green</i>	<i>Port Buoy</i>	
<i>S95</i>	<i>Green</i>	<i>Port Day Beacon</i>	
<i>S90</i>	<i>Red</i>	<i>Starboard buoy</i>	
<i>S91</i>	<i>Green</i>	<i>Port Buoy</i>	
<i>S87</i>	<i>Green</i>	<i>Port Day Beacon</i>	
<i>S85</i>	<i>Green</i>	<i>Port Buoy</i>	
<i>S84</i>	<i>Red</i>	<i>Starboard buoy</i>	
<i>S80</i>	<i>Red</i>	<i>Starboard buoy</i>	
<i>S77</i>	<i>Green</i>	<i>Port Day Beacon</i>	
<i>S75</i>	<i>Green</i>	<i>Port Buoy</i>	
<i>S70</i>	<i>Red</i>	<i>Starboard Day Beacon</i>	
<i>S68</i>	<i>Red</i>	<i>Starboard buoy</i>	
<i>S65</i>	<i>Green</i>	<i>Port Day Beacon</i>	
<i>S58</i>	<i>Red</i>	<i>Starboard buoy</i>	<i>Not On Route – Take Left to get to the Clubhouse/Community Centre for Break</i>
<i>S55-1</i>	<i>Green</i>	<i>Port Day Beacon</i>	
<i>S55</i>	<i>Green</i>	<i>Port Buoy</i>	
<i>S54</i>	<i>Red</i>	<i>Starboard buoy</i>	
<i>S47</i>	<i>Green</i>	<i>Port Buoy</i>	
<i>S48</i>	<i>Red</i>	<i>Starboard Day Beacon</i>	
<i>S45/1</i>	<i>Green</i>	<i>Port Buoy</i>	
<i>S44</i>	<i>Red</i>	<i>Starboard buoy</i>	
<i>S43</i>	<i>Green</i>	<i>Port Buoy</i>	
<i>S41</i>	<i>Green</i>	<i>Port Buoy</i>	
<i>S42</i>	<i>Red</i>	<i>Starboard buoy</i>	
<i>S40</i>	<i>Red</i>	<i>Starboard buoy</i>	
<i>S39</i>	<i>Green</i>	<i>Port Buoy</i>	
<i>S37</i>	<i>Green</i>	<i>Port Buoy</i>	
<i>S35</i>	<i>Green</i>	<i>Port Buoy</i>	
<i>S36</i>	<i>Red</i>	<i>Starboard buoy</i>	
<i>S34</i>	<i>Red</i>	<i>Starboard Day Beacon</i>	
<i>S33</i>	<i>Green</i>	<i>Port Day Beacon</i>	
<i>S31</i>	<i>Green</i>	<i>Port Buoy</i>	
<i>S32</i>	<i>Red</i>	<i>Starboard Day Beacon</i>	
<i>S27</i>	<i>Green</i>	<i>Port Buoy</i>	
<i>S28</i>	<i>Red</i>	<i>Starboard buoy</i>	
<i>S24</i>	<i>Red</i>	<i>Starboard buoy</i>	
<i>S23</i>	<i>Green</i>	<i>Port Buoy</i>	
<i>S21</i>	<i>Green</i>	<i>Port Day Beacon</i>	
<i>S18</i>	<i>Red</i>	<i>Starboard buoy</i>	
<i>S16</i>	<i>Red</i>	<i>Starboard buoy</i>	
<i>S12</i>	<i>Red</i>	<i>Starboard buoy</i>	
<i>PRIV</i>	<i>Red</i>	<i>Starboard buoy</i>	
<i>PRIV</i>	<i>Green</i>	<i>Port Buoy</i>	
<i>PRIV</i>	<i>Green</i>	<i>Port Buoy</i>	
<i>PRIV</i>	<i>Red</i>	<i>Starboard buoy</i>	
<i>PRIV</i>	<i>Green</i>	<i>Port Buoy</i>	
<i>PRIV</i>	<i>Red</i>	<i>Starboard buoy</i>	
<i>PRIV</i>	<i>Green</i>	<i>Port Buoy</i>	





Identification No.	Colour	Buoy or Day Beacon	Comments
<i>PRIV</i>	<i>Red</i>	<i>Starboard buoy</i>	
<i>PRIV</i>	<i>Green</i>	<i>Port Buoy</i>	
<i>PRIV</i>	<i>Green</i>	<i>Port Buoy</i>	
<i>PRIV</i>	<i>Red</i>	<i>Starboard buoy</i>	
<i>PRIV</i>	<i>Green</i>	<i>Port Buoy</i>	
<i>PRIV</i>	<i>Red</i>	<i>Starboard buoy</i>	
<i>PRIV</i>	<i>Green</i>	<i>Port Buoy</i>	
<i>PRIV</i>	<i>Red</i>	<i>Starboard buoy</i>	
<i>PRIV</i>	<i>Green</i>	<i>Port Buoy</i>	
<i>PRIV</i>	<i>Red</i>	<i>Starboard buoy</i>	
<i>PRIV</i>	<i>Green</i>	<i>Port Buoy</i>	
<i>PRIV</i>	<i>Red</i>	<i>Starboard buoy</i>	
<i>PRIV</i>	<i>Red</i>	<i>Starboard buoy</i>	
<i>PRIV</i>	<i>Green</i>	<i>Port Buoy</i>	
<i>PRIV</i>	<i>Red</i>	<i>Starboard buoy</i>	
<i>PRIV</i>	<i>Red</i>	<i>Starboard buoy</i>	
<i>PRIV</i>	<i>Red</i>	<i>Starboard buoy</i>	
<i>PRIV</i>	<i>Red</i>	<i>Starboard buoy</i>	
<i>PRIV</i>	<i>Red</i>	<i>Starboard buoy</i>	